

1. Structure:

Item		Specification
Conductor	Size	23 AWG x 4P with geometry separator
	Construction	Solid Bare Copper
	Cond. Diam.	0.575 mm
Insulation	Average Thickness	0.222 mm
	Minimal Thickness	0.198 mm
	Diameter	1.02 mm +/- 0.01 mm
	Material	PE
Jacketing	Average Thickness	0.80 mm
	Minimal Thickness	0.72 mm
	Outer Diameter	7.20 mm +/- 0.30 mm
	Material	Anti-UV PVC (CMX)
	Color	Blue

2. Wire Construction:

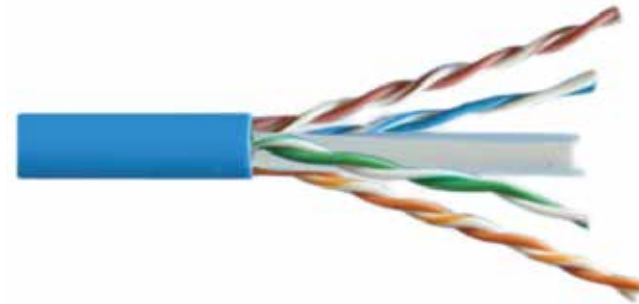
Pair	Wire Arrangement
1P	Blue / Blue * White
2P	Orange / Orange * White
3P	Green / Green * White
4P	Brown / Brown * White

3. Characteristic:

1. Electrical Properties	Refer to TIA/EIA-568B.2-1	
2. Physical Properties		
	(1) Insulation: (unaged)	Tensile strength: 2400 psi Elongation: 300%
	(2) Jacket: (unaged)	Tensile strength: 2000 psi Elongation: 100%
	(3) Flame:	VW-1
3. Conductor Resistance	93.8 OHM/KM at 20° C Max	
Spark Test:	1750 V AC	
Dielectric Strength:	1500 V AC. 2S	

4. Marking

Connection Cabling Solutions, UTP 4PR 23 AWG
ETL FT4 VERIFIED TO TIA / EIA-568B.2-1 & ISO/IEC 11801
ENHANCED CAT 6



5. Packing



ORDER INFORMATION

Order Number	Description
CUT-6403	CAT-6 Cable UTP, 250MHz, Par 4-Balanced Tested 1000FT, BLUE