

1. Structure:

Item		Specification
Conductor	Size	24 AWG x 4P with geometry separator
	Construction	Stranded Copper
	Cond. Diam.	0.511 mm
Insulation	Average Thickness	0.22 mm
	Minimal Thickness	0.198 mm
	Diameter	1.02 mm +/- 0.01 mm
	Material	PE
Jacketing	Average Thickness	0.80 mm
	Minimal Thickness	0.72 mm
	Outer Diameter	7.00 mm +/- 0.30 mm
	Material	Anti-UV PVC (CMX)
	Color	Gray

2. Wire Construction:

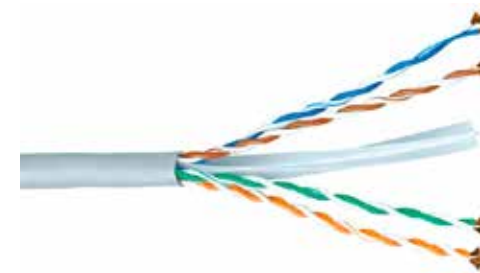
Pair	Wire Arrangement
1P	Blue / Blue * White
2P	Orange / Orange * White
3P	Green / Green * White
4P	Brown / Brown * White

3. Characteristic:

1. Electrical Properties	Refer to TIA/EIA-568B.2-1
2. Physical Properties	
(1) Insulation: (unaged)	Tensile strength: 2400 psi Elongation: 300%
(2) Jacket: (unaged)	Tensile strength: 2000 psi Elongation: 100%
(3) Flame:	VW-1
3. Conductor Resistance	
	93.8 OHM/KM at 20° C Max
Spark Test:	1750 V AC
Dielectric Strength:	1500 V AC. 2S
4. Center Degree:	93%

4. Marking

Connection Cabling Solutions, UTP 4PR 24 AWG
ETL FT4 VERIFIED TO TIA / EIA-568B.2-1 & ISO/IEC 11801
ENHANCED CAT 6



5. Packing



ORDER INFORMATION

ORDER NUMBER	DESCRIPTION
CUT-6501	CAT-6 Flexible Cable UTP, 250MHz, Par 4-Balanced 1000FT, GRAY